



DISTRIBUTION SMS

ACIER INOXYDABLE - STAINLESS STEEL

*SANITARY TUBES & FITTINGS
FOR FOOD & LIFE SCIENCES*

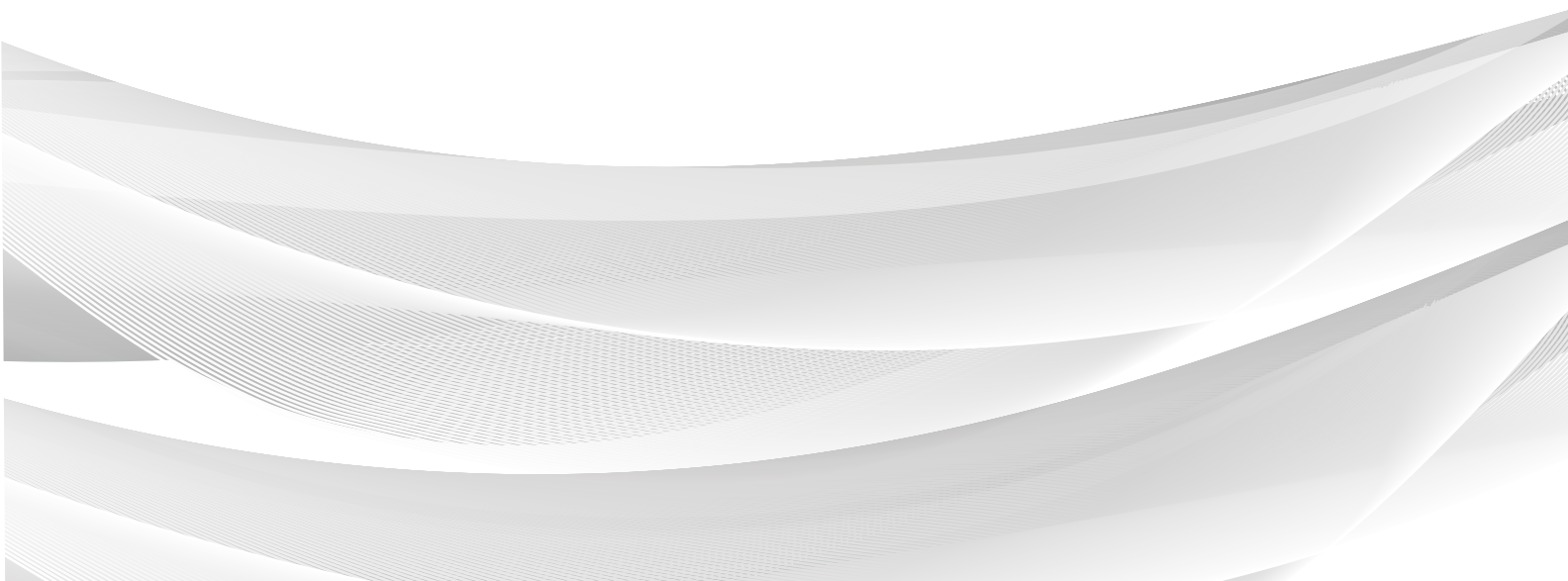


DISTRIBUTION



ACIER INOXYDABLE - STAINLESS STEEL

Hygienic tubes & fittings for food & Life Sciences





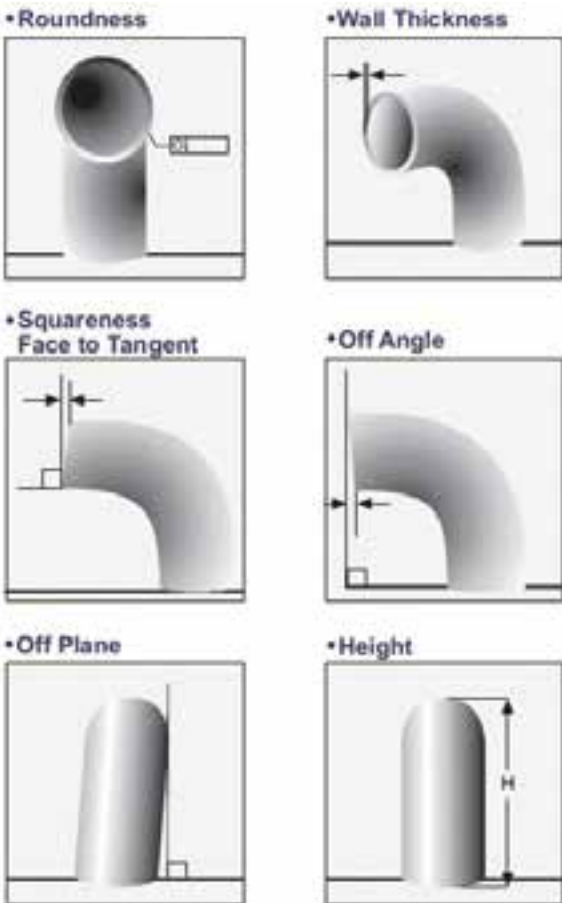
HOW SMS IS SAYING "QUALITY"

Essentials to tracing of materials

We use raw material spectrum scanner to test the originality of materials of products. Products raw materials have numbers for tracking and tracing. Each SMS product has a heat number that is uploaded on SMS's website. Customers can visit our website, enter the heat number of a specific product and download the corresponding Inspection Certificate.



Every process undergoes a detailed amplification examination



We use different measuring tools in different stages of production of tubes and fittings to enhance perfection of products. These include but not limited to the following; pre-polishing testing, manufacturing tests and the final test of finished or completed goods, and the tolerance range criteria control. SMS fittings must go through final testing before delivery to ensure every fitting quality has been met.



A270 SANITARY STAINLESS STEEL TUBING

For Dairy, Food, Beverage, and
Other Sanitary Processes.

RathGibson's sanitary tubing exceeds ASTM A270 S2 and 3A specifications and most user specifications. It is manufactured from the finest quality stainless steel materials made exclusively to the RathGibson melt criteria and formed by RathGibson Micro-Weld™ process to assure weld seam integrity and industry leading ID & OD finishes to the low Ra values demanded by RathGibson's customers. RathGibson leads the industry in manufacturing the highest quality welded sanitary tubing, backed with technical expertise, advanced manufacturing and polishing capabilities and unmatched service before and after the sale. All standard sanitary tubing sizes are available in 1/2" (12.7 mm) to 8" (203.2 mm) OD in 20' (6.1 m) lengths.



ISO 9001:2000
CERTIFIED

PED 97/23/EC
CERTIFIED



SANITARY STAINLESS STEEL TUBING

Materials

- 304L & 316L available from stock.

Mechanical Tests

To ensure the highest surface quality in all of our sanitary tubing, RathGibson goes beyond the requirements of ASTM A269 and A270 by performing the full battery of ASTM bend and deformation tests required by ASME SA249 as well as additional deformation tests developed by RathGibson. The tests, combined with specific raw material requirements, eddy current testing at the tube mill and tighter OD and wall tolerances allow RathGibson to provide a more consistent superior quality product.

Annealing

- Hydrogen bright annealed in line to 1900 OF (1040 OC) minimum and rapidly quenched.

Surface Finishes*

Surface finish is 20 u-in Ra (0.5 um) ID maximum, 30 u-in Ra (0.8 um) OD maximum surface roughness measured per ASME/ANSI B46.1 with the profilometer reading at 90 degrees to major polishing pattern. RathGibson's polishing techniques results in surface finishes that lead the industry. All tubing is printed with size, gauge, alloy, ASTM and ASME specifications, heat number and date of manufacturing for full traceability.

Packaging

As a final step in maintaining purity standards, RathGibson's A270 S2 tubing is packaging using protective 2 mil poly sleeving along with air tight plastic end caps. The tubing is then placed in triple wall boxes for maximum protection during shipment. Other packaging is available on customer request.

Specification

Tubing shall be RathGibson Sanitary Stainless Steel Tubing. Surface finish is 20 u-in Ra (0.5 um) ID, 30 u-in Ra (0.8 um) OD maximum measured per ASME/ANSI B46.1 with profilometer reading at 90 degrees to major polishing pattern.

**1/2" (12.7mm), 3/4" (19.1mm) tubing*

Surface finish for this size range is 30 u-in Ra (0.8 um) ID maximum. Other Ra finishes are available upon request.

Chemical Composition

Elements	304L (wt%)	316L (wt%)
(C) Carbon, max	0.035	0.035
(Mn) Manganese, max	2.00	2.00
(P) Phosphorus, max	0.040	0.040
(S) Sulfur, max	0.030	0.030
(Si) Silicon, max	0.75	0.75
(Ni) Nickel	8.0 - 13.0	10.0 - 15.0
(Cr) Chromium	18.0 - 20.0	16.0 - 18.0
(Mo) Molybdenum	N/A	2.0 - 3.0
(Fe) Iron	Bal.	Bal.
(Cu) Copper	N/A	N/A
(N) Nitrogen	N/A	N/A

Chemical Composition

all dimensions in inches (mm)

Size OD	Nominal Wall	Outside Diameter	Length	Length
1/2" (12.7)	0.065"(1.65)/0.049"(1.25)	+/- 0.005 (0.13)	+1/8"(3.18)-0	+/-10.0%
3/4" (19.1)	0.065"(1.65)/0.049"(1.25)	+/- 0.005 (0.13)	+1/8"(3.18)-0	+/-10.0%
1" (25.4)	0.065"(1.65)/0.049"(1.25)	+/- 0.005 (0.13)	+1/8"(3.18)-0	+/-10.0%
1-1/2" (38.1)	0.065"(1.65)/0.049"(1.25)	+/- 0.008 (0.20)	+1/8"(3.18)-0	+/-10.0%
2" (50.8)	0.065"(1.65)/0.049"(1.25)	+/- 0.008 (0.20)	+1/8"(3.18)-0	+/-10.0%
2-1/2" (63.5)	0.065" (1.65)	+/- 0.010 (0.25)	+1/8"(3.18)-0	+/-10.0%
3" (76.2)	0.065" (1.65)	+/- 0.010 (0.25)	+1/8"(3.18)-0	+/-10.0%
4" (101.6)	0.083" (2.11)	+/- 0.015 (0.38)	+1/8"(3.18)-0	+/-10.0%
6" (152.4)	0.083" (2.11)	+/- 0.030 (0.76)	+1"(25.4)-0	+/-10.0%
6" (152.4)	0.109" (2.77)	+/- 0.030 (0.76)	+1"(25.4)-0	+/-10.0%
8" (203.2)	0.109" (2.77)	+ 0.061 (1.55) - 0.031 (0.79)	+1"(25.4)-0	+/-10.0%



CLAMP FITTINGS

Clamp FITTINGS all acc. to 3A

1.1





TUBES AND FITINGS

- 3A sanitary finish ID and OD
- Other finishes are available
- Connections: Clamp ends



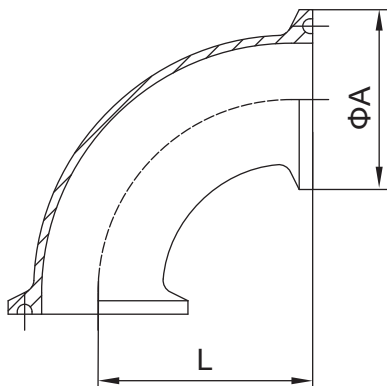
CLAMP FITTINGS

Part for ASTM A270 tubes

1.1



2CMP
90 Degree Clamp Elbow



Size	A		L	
	inch	mm	inch	mm
1.0"	1.988	50.5	2.000	50.8
1.5"	1.988	50.5	2.750	69.9
2.0"	2.520	64.0	3.500	88.9
2.5"	3.051	77.5	4.250	107.9
3.0"	3.583	91.0	5.000	127.0
4.0"	4.685	119.0	6.625	168.2

**T304 and T316L are available.

NOTE! Treatment: Annealed.

**All measurements are in millimeters (mm)
Conversion to inches, 25.4mm= 1inch



TUBES AND FITINGS

- 3A sanitary finish ID and OD
- Other finishes are available
- Connections: Clamp ends



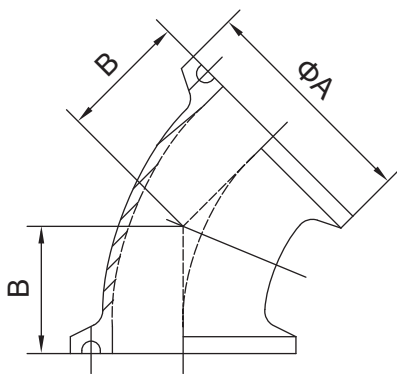
CLAMP FITTINGS

Part for ASTM A270 tubes

1.1



2KMP
45 Degree Clamp Elbow



Size	A		B	
	inch	mm	inch	mm
1.0"	1.988	50.5	1.125	28.5
1.5"	1.988	50.5	1.437	36.5
2.0"	2.520	64.0	1.750	44.45
2.5"	3.051	77.5	2.062	52.3
3.0"	3.583	91.0	2.375	60.3
4.0"	4.685	119.0	3.125	79.4

**T304 and T316L are available.

**All measurements are in millimeters (mm)
Conversion to inches, 25.4mm=1inch



CLAMP FITTINGS

Part for ASTM A270 tubes

TUBES AND FITINGS

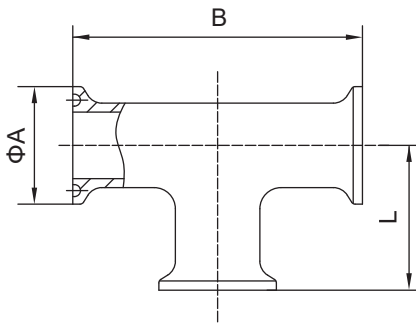
- 3A sanitary finish ID and OD
- Other finishes are available
- Connections: Clamp ends



1.1



7MP
Clamp Equal Tee



Size	A		B		L	
	inch	mm	inch	mm	inch	mm
1.0"	1.988	50.5	4.750	120.6	2.375	60.3
1.5"	1.988	50.5	5.500	139.8	2.750	69.9
2.0"	2.520	64.0	7.000	177.8	3.500	88.9
2.5"	3.051	77.5	7.000	177.8	3.500	88.9
3.0"	3.583	91.0	7.500	190.5	3.750	95.3
4.0"	4.685	119.0	9.000	228.6	4.500	114.3

**T304 and T316L are available.

NOTE! Treatment: Annealed.

**All measurements are in millimeters (mm)
Conversion to inches, 25.4mm=1inch



CLAMP FITTINGS

Part for ASTM A270 tubes

TUBES AND FITINGS

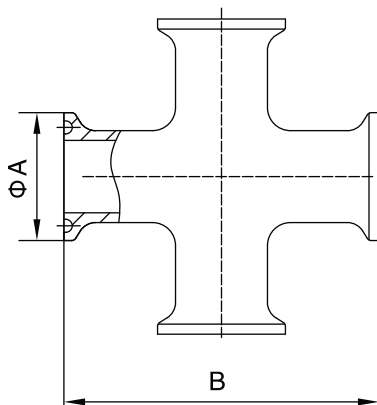
- 3A sanitary finish ID and OD
- Other finishes are available
- Connections: Clamp ends



1.1



9MP
Clamp Equal Cross



Size	A		B	
	inch	mm	inch	mm
1.0"	1.988	50.5	4.750	120.6
1.5"	1.988	50.5	5.500	139.8
2.0"	2.520	64.0	7.000	177.8
2.5"	3.051	77.5	7.000	177.8
3.0"	3.583	91.0	7.500	190.5
4.0"	4.685	119.0	9.000	228.6

**T304 and T316L are available.

**All measurements are in millimeters (mm)
Conversion to inches, 25.4mm= 1inch



CLAMP FITTINGS

Part for ASTM A270 tubes

TUBES AND FITINGS

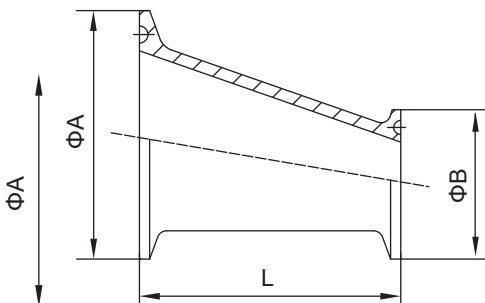
- 3A sanitary finish ID and OD
- Other finishes are available
- Connections: Clamp ends



1.1



32-14MP
Eccentric Reducer



Size	A		B		L	
	inch	mm	inch	mm	inch	mm
1.5"×1.0"	1.988	50.5	1.988	50.5	3.000	76.2
2.0"×1.0"	2.520	64.0	1.988	50.5	5.000	127.0
2.0"×1.5"	2.520	64.0	1.988	50.5	3.000	76.2
2.5"×1.0"	3.051	77.5	1.988	50.5	7.000	177.8
2.5"×1.5"	3.051	77.5	1.988	50.5	5.000	127.0
2.5"×2.0"	3.051	77.5	2.520	64.0	3.000	76.2
3.0"×1.0"	3.583	91.0	1.988	50.5	9.000	228.6
3.0"×1.5"	3.583	91.0	1.988	50.5	7.000	177.8
3.0"×2.0"	3.583	91.0	2.520	64.0	5.000	127.0
3.0"×2.5"	3.583	91.0	3.051	77.5	3.000	76.2
4.0"×1.5"	4.685	119.0	1.988	50.5	11.125	282.5
4.0"×2.0"	4.685	119.0	2.520	64.0	9.125	231.7
4.0"×2.5"	4.685	119.0	3.051	77.5	7.125	180.9
4.0"×3.0"	4.685	119.0	3.583	91.0	5.125	130.1

**T304 and T316L are available.

NOTE! Treatment: Annealed.

**All measurements are in millimeters (mm)
Conversion to inches, 25.4mm=1inch



CLAMP FITTINGS

Part for ASTM A270 tubes

TUBES AND FITINGS

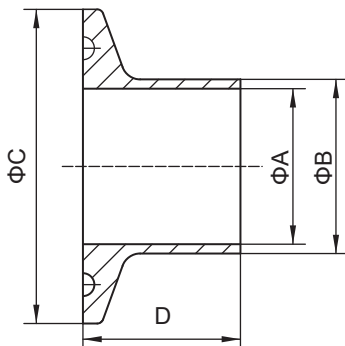
- 3A sanitary finish ID and OD
- Other finishes are available
- Connections: Clamp ends



1.1



L14AM7
Long Weld Ferrule



Size	A		B		C		D	
	inch	mm	inch	mm	inch	mm	inch	mm
0.5"	0.370	9.4	0.500	12.7	0.992	25.2	1.125	28.6
0.75"	0.620	15.7	0.750	19.05	0.992	25.2	1.125	28.6
1"	0.870	22.1	1.000	25.4	1.988	50.5	1.125	28.6
1.5"	1.370	34.8	1.500	38.1	1.988	50.5	1.125	28.6
2"	1.870	47.5	2.000	50.8	2.520	64.0	1.125	28.6
2.5"	2.370	60.2	2.500	63.5	3.051	77.5	1.125	28.6
3"	2.870	72.9	3.000	76.2	3.583	91.0	1.125	28.6
4"	3.834	97.4	4.000	101.6	4.685	119.0	1.125	28.6
6"	5.782	146.9	6.000	152.4	6.567	166.8	1.500	38.1
8"	7.760	197.1	8.000	203.2	8.571	217.7	1.500	38.1
10"	9.782	248.5	10.000	254.0	10.571	268.5	1.750	44.5
12"	11.760	298.7	12.000	304.8	12.571	319.3	1.750	44.5

**T304 and T316L are available.

**All measurements are in millimeters (mm)
Conversion to inches, 25.4mm=1inch



CLAMP FITTINGS

Part for ASTM A270 tubes

TUBES AND FITINGS

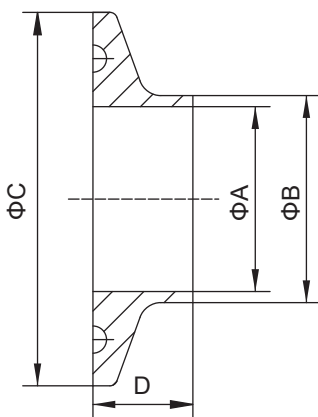
- 3A sanitary finish ID and OD
- Other finishes are available
- Connections: Clamp ends



1.1



14WMP
Short Weld Ferrule



Size	A		B		C		D	
	inch	mm	inch	mm	inch	mm	inch	mm
0.5"	0.370	9.4	0.500	12.7	0.992	25.2	0.500	12.7
0.75"	0.620	15.75	0.750	19.05	0.992	25.2	0.500	12.7
1"	0.870	22.1	1.000	25.4	1.988	50.5	0.500	12.7
1.5"	1.370	34.8	1.500	38.1	1.988	50.5	0.500	12.7
2"	1.870	47.5	2.000	50.8	2.520	64.0	0.500	12.7
2.5"	2.370	60.2	2.500	63.5	3.051	77.5	0.500	12.7
3"	2.870	72.9	3.000	76.2	3.583	91.0	0.500	12.7
4"	3.834	97.4	4.000	101.6	4.685	119.0	0.625	15.8
6"	5.782	146.9	6.000	152.4	6.567	166.8	0.875	22.2
8"	7.760	197.1	8.000	203.2	8.571	217.7	0.875	22.2
10"	9.782	248.5	10.000	254.0	10.571	268.5	0.875	22.2
12"	11.760	298.7	12.000	304.8	12.571	319.3	0.875	22.2

NOTE! Treatment: Annealed.

**T304 and T316L are available.

**All measurements are in millimeters (mm)
Conversion to inches, 25.4mm=1inch



TUBES AND FITINGS

- 3A sanitary finish ID and OD
- Other finishes are available
- Connections: Clamp ends



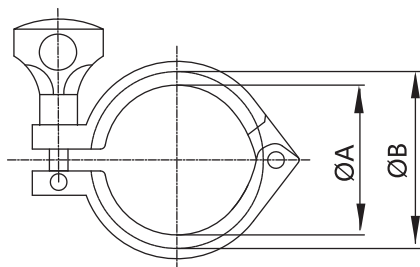
CLAMP FITTINGS

Part for ASTM A270 tubes

1.1



13MHM
Single Hinge Heavy Duty Clamp



Size	A		B	
	icnh	mm	inch	mm
0.5"-0.75"	0.787	20.0	1.062	27.0
1"-1.5"	1.748	44.4	2.122	53.8
2"	2.276	57.8	2.654	67.4
2.5"	2.811	71.4	3.185	80.9
3"	3.307	84.0	3.717	94.4
3.5"	3.898	99.0	4.299	109.2
4"	4.331	110.0	4.820	122.4
4.5"	4.843	123.0	5.244	133.2
6"	6.118	155.4	6.695	170.0
8"	8.071	205.0	8.695	220.8
10"	10.118	257.0	10.695	271.7
12"	12.126	308.0	12.695	322.4

**Only T304 is available.

**All measurements are in millimeters (mm)
Conversion to inches, 25.4mm=1inch



TUBES AND FITTINGS



CLAMP FITTINGS

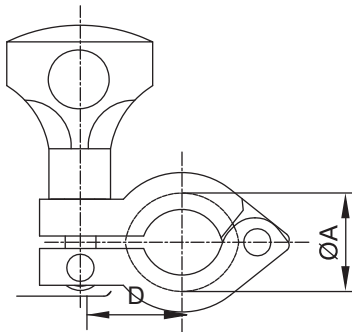
Part for ASTM A270 tubes

- 3A sanitary finish ID and OD
- Other finishes are available
- Connections: Clamp ends

1.1



13MHHS / A13MHHS**
Fractional Clamp



Size		A	
in	mm	in	mm
0.750	19.0	1.062	27.0

**Only T304 is available.

NOTE! Treatment: Annealed.

**All measurements are in millimeters (mm)
Conversion to inches, 25.4mm=1inch



TUBES AND FITINGS

- 3A sanitary finish ID and OD
- Other finishes are available
- Connections: Clamp ends



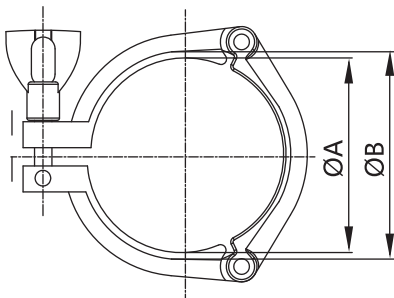
CLAMP FITTINGS

Part for ASTM A270 tubes

1.1



13MHHS
3-Segment Heavy Duty Clamp



Size	A		B	
	inch	mm	inch	mm
1"-1.5"	1.748	44.4	2.122	53.8
2"	2.276	57.8	2.654	67
2.5"	2.811	71.4	3.185	80.6
3"	3.307	84	3.717	94.2
3.5"	3.898	99	4.299	109.2
4"	4.331	110	4.820	122.2
4.5"	4.843	123	5.244	133.2
6"	6.118	155.4	6.695	170.4

**Only T304 is available.

**All measurements are in millimeters (mm)
Conversion to inches, 25.4mm=1inch

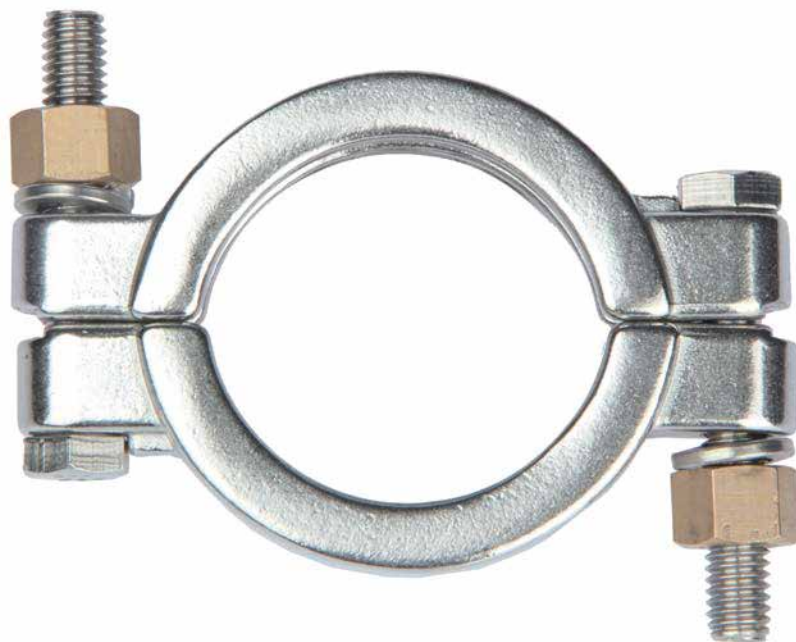


TUBES AND FITINGS

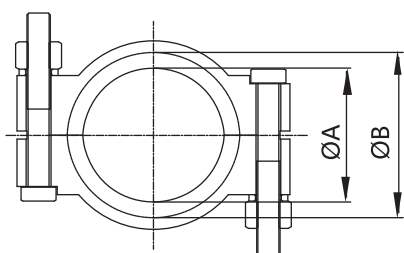
- 3A sanitary finish ID and OD
- Other finishes are available
- Connections: Clamp ends

A³ **CLAMP FITTINGS**
Part for ASTM A270 tubes

1.1



13MHP
High Pressure Clamp



Size	A		B	
	inch	mm	inch	mm
1"-1.5"	1.748	44.4	2.046	52.0
2"	2.276	57.8	2.578	65.5
2.5"	2.811	71.4	3.110	79.0
3"	3.307	84	3.640	92.4
3.5"	3.898	99	4.299	109.2
4"	4.331	110	4.744	120.5
4.5"	4.843	123	5.244	133.2
6"	6.118	155.4	6.632	168.4

**Only T304 is available.

NOTE! Treatment: Annealed.

**All measurements are in millimeters (mm)
Conversion to inches, 25.4mm=1inch



CLAMP FITTINGS

Part for ASTM A270 tubes

TUBES AND FITINGS

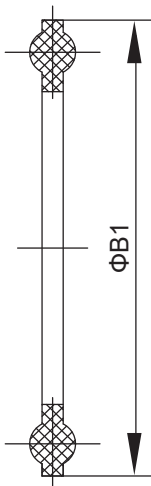
- 3A sanitary finish ID and OD
- Other finishes are available
- Connections: Clamp ends



1.1



40MP Gasket



Size	B1	
	inch	mm
0.5"-0.75"	0.858	21.8
1"-1.5"	1.988	50.5
2"	2.520	64.0
2.5"	3.051	77.5
3"	3.583	91.0
4"	4.685	119.0
4.5"	5.118	130.0
6"	6.567	166.8
8"	8.571	217.7
10"	10.571	268.5
12"	12.571	319.3

**Silicone, EPDM, FPM and PTFE are available.

**All measurements are in millimeters (mm)
Conversion to inches, 25.4mm=1inch



CLAMP FITTINGS

Part for ASTM A270 tubes

TUBES AND FITINGS

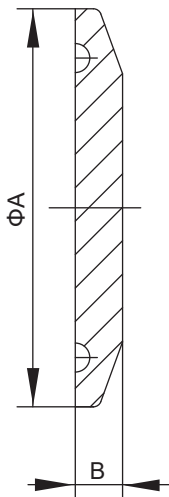
- 3A sanitary finish ID and OD
- Other finishes are available
- Connections: Clamp ends



1.1



16AMP
Solid End Cap



Size	A		B	
	inch	mm	inch	mm
0.5"-0.75"	0.992	25.2	0.187	4.7
1"-1.5"	1.988	50.5	0.252	6.4
2"	2.520	64.0	0.252	6.4
2.5"	3.051	77.5	0.252	6.4
3"	3.583	91.0	0.252	6.4
4"	4.685	119.0	0.311	7.9
6"	6.567	166.8	0.437	11.1
8"	8.571	217.7	0.437	11.1
10"	10.571	268.5	0.437	11.1
12"	12.571	319.3	0.437	11.1

**T304 and T316L are available.

NOTE! Treatment: Annealed.

**All measurements are in millimeters (mm)
Conversion to inches, 25.4mm=1inch



CLAMP FITTINGS

Part for ASTM A270 tubes

TUBES AND FITINGS

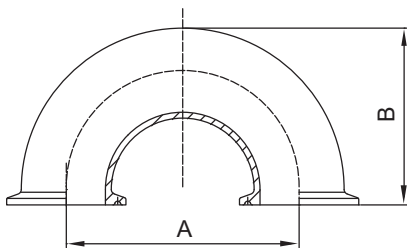
- 3A sanitary finish ID and OD
- Other finishes are available
- Connections: Clamp ends



1.1



2UMP
Clamp 180 Degree Return Bend



Size	A		B	
	inch	mm	inch	mm
1"	3.000	76.2	2.500	63.5
1.5"	4.500	114.3	3.500	88.9
2"	6.000	152.4	4.500	114.3
2.5"	7.500	190.5	5.500	139.7
3"	9.000	228.6	6.500	165.1
4"	12.000	304.8	8.625	219.1

**T304 and T316L are available.

**All measurements are in millimeters (mm)
Conversion to inches, 25.4mm=1inch



TUBES AND FITTINGS

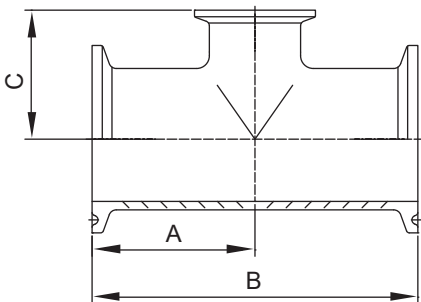
A³ **CLAMP FITTINGS**
Part for ASTM A270 tubes

- 3A sanitary finish ID and OD
- Other finishes are available
- Connections: Clamp ends

1.1



7RMP
Clamp End Reducing Tee



Size	A		B		C	
	inch	mm	inch	mm	inch	mm
1.5"x1"	2.156	54.8	4.312	109.5	1.875	47.6
2"x1"	2.562	65.1	5.125	130.2	2.125	54.0
2"x1.5"	2.562	65.1	5.125	130.2	2.406	61.1
2.5"x1.5"	2.844	72.2	5.688	144.5	2.656	67.5
2.5"x2"	2.844	72.2	5.688	144.5	2.812	71.4
3"x1.5"	3.093	78.6	6.188	157.2	2.906	73.8
3"x2"	3.093	78.6	6.188	157.2	3.063	77.8
3"x2.5"	3.093	78.6	6.188	157.2	3.093	78.6
4"x1.5"	4.063	103.2	8.125	206.4	3.406	86.5
4"x2"	4.063	103.2	8.125	206.4	3.563	90.5
4"x2.5"	4.063	103.2	8.125	206.4	3.594	91.3
4"x3"	4.063	103.2	8.125	206.4	3.594	91.3

**T304 and T316L are available.

NOTE! Treatment: Annealed.

**All measurements are in millimeters (mm)
Conversion to inches, 25.4mm=1inch



CLAMP FITTINGS

Part for ASTM A270 tubes

TUBES AND FITINGS

- 3A sanitary finish ID and OD
- Other finishes are available
- Connections: Clamp ends

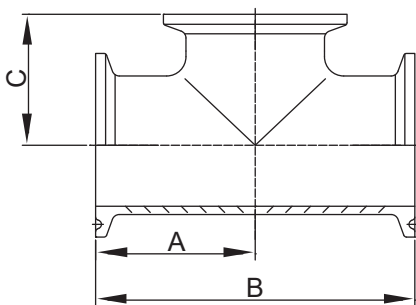


1.1



7MPS

Clamp End Short Outlet Tee



Size	A		B		C	
	inch	mm	inch	mm	inch	mm
1"	2.375	60.3	4.750	120.6	1.125	28.6
1.5"	2.750	69.8	5.500	139.7	1.375	34.9
2"	3.500	88.9	7.000	177.8	1.625	41.3
2.5"	3.500	88.9	7.000	177.8	1.875	47.6
3"	3.750	95.2	7.500	190.5	2.125	54.0
4"	4.500	114.3	9.000	228.6	2.750	69.9

**T304 and T316L are available.

**All measurements are in millimeters (mm)
Conversion to inches, 25.4mm=1inch



TUBES AND FITINGS



CLAMP FITTINGS

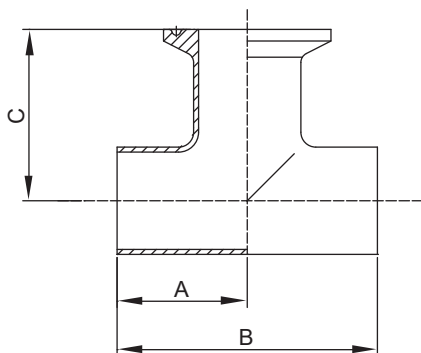
Part for ASTM A270 tubes

- 3A sanitary finish ID and OD
- Other finishes are available
- Connections: Clamp ends

1.1



7WWM
Weld X Weld X Clamp Outlet Tee



Size	A		B		C	
	inch	mm	inch	mm	inch	mm
1"	1.125	28.6	2.250	57.1	1.625	41.3
1.5"	1.656	42.1	3.312	84.1	2.156	54.8
2"	2.063	52.4	4.125	104.8	2.563	65.1
2.5"	2.344	59.5	4.688	119.1	2.844	72.2
3"	2.594	65.9	5.188	131.8	3.094	78.6
4"	3.438	87.3	6.875	174.6	4.063	103.2

**T304 and T316L are available.

NOTE! Treatment: Annealed.

**All measurements are in millimeters (mm)
Conversion to inches, 25.4mm=1inch



TUBES AND FITINGS



CLAMP FITTINGS

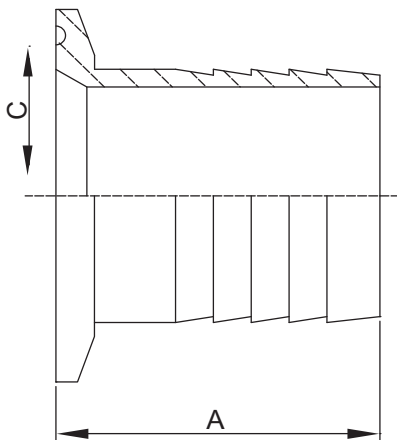
Part for ASTM A270 tubes

- 3A sanitary finish ID and OD
- Other finishes are available
- Connections: Clamp ends

1.1



14MPHR
Rubber Hose Adapter



Size	A	
	inch	mm
0.5"	1.500	38.1
0.75"	1.500	38.1
1"	1.688	42.9
1.5"	1.687	42.8
2"	2.312	58.7
2.5"	2.344	59.5
3"	3.094	78.6
4"	3.406	86.5
6"	3.406	86.5
8"	3.406	86.5

**T304 and T316L are available.

**All measurements are in millimeters (mm)
Conversion to inches, 25.4mm=1inch



CLAMP FITTINGS

Part for ASTM A270 tubes

TUBES AND FITINGS

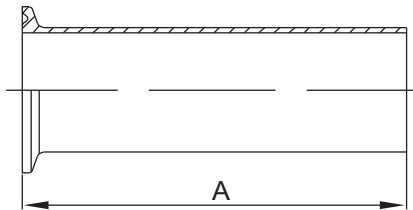
- 3A sanitary finish ID and OD
- Other finishes are available
- Connections: Clamp ends



1.1



14MPHT
Tygon Hose Adapter



Size	A	
	inch	mm
1"	4.500	114.3
1.5"	4.500	114.3
2"	4.500	114.3
2.5"	4.500	114.3
3"	4.500	114.3
4"	4.625	117.5

**T304 and T316L are available.

NOTE! Treatment: Annealed.

**All measurements are in millimeters (mm)
Conversion to inches, 25.4mm= 1inch



TUBES AND FITINGS

- 3A sanitary finish ID and OD
- Other finishes are available
- Connections: Clamp ends



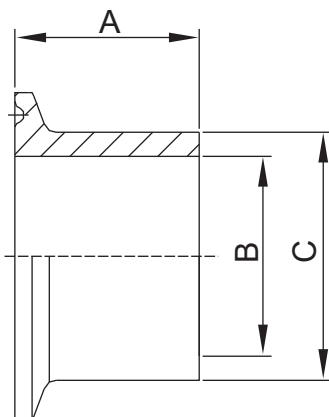
CLAMP FITTINGS

Part for ASTM A270 tubes

1.1



14MPW
Heavy Wall Tank Weld
Ferrule (Spud)



Size	A		B		C	
	inch	mm	inch	mm	inch	mm
0.5"	1.625	41.3	0.321	8.1	0.502	12.7
0.75"	1.625	41.3	0.574	14.6	0.750	19.0
1"	1.625	41.3	0.870	22.1	1.160	29.4
1.5"	1.625	41.3	1.370	34.8	1.676	42.6
2"	1.750	44.4	1.870	47.5	2.192	55.7
2.5"	1.750	44.4	2.370	60.2	2.708	68.8
3"	1.813	46.0	2.870	72.9	3.224	81.9
4"	2.125	54.0	3.834	97.4	4.256	108.1
6"	2.500	63.5	5.758	146.2	6.192	157.3
8"	2.500	63.5	7.758	197.0	8.192	208.1

**T304 and T316L are available.

**All measurements are in millimeters (mm)
Conversion to inches, 25.4mm=1inch



CLAMP FITTINGS

Part for ASTM A270 tubes

TUBES AND FITINGS

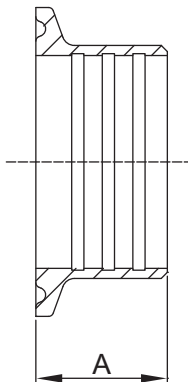


- 3A sanitary finish ID and OD
- Other finishes are available
- Connections: Clamp ends

1.1



14RMP
Roll-On Ferrule (expanding)



Size	A	
	inch	mm
1"	0.750	19.0
1.5"	1.125	28.6
2"	1.313	33.4
2.5"	1.375	34.9
3"	1.438	36.5
4"	1.500	38.1

**T304 and T316L are available.

NOTE! Treatment: Annealed.

**All measurements are in millimeters (mm)
Conversion to inches, 25.4mm=1inch



TUBES AND FITINGS

- 3A sanitary finish ID and OD
- Other finishes are available
- Connections: Clamp ends



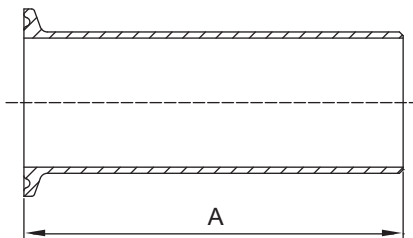
CLAMP FITTINGS

Part for ASTM A270 tubes

1.1



14WLMP
Light Wall Tank Weld Ferrule



Size	A	
	inch	mm
0.5"	3.000	76.2
0.75"	3.000	76.2
1"	3.000	76.2
1.5"	3.000	76.2
2"	3.000	76.2
2.5"	3.000	76.2
3"	4.000	101.6
4"	4.000	101.6
6"	6.000	152.4
8"	6.000	152.4
10"	6.000	152.4
12"	6.000	152.4

**T304 and T316L are available.

**All measurements are in millimeters (mm)
Conversion to inches, 25.4mm=1inch



TUBES AND FITINGS

- 3A sanitary finish ID and OD
- Other finishes are available
- Connections: Clamp ends



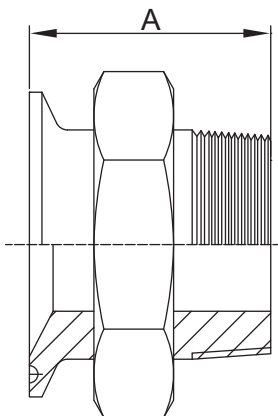
CLAMP FITTINGS

Part for ASTM A270 tubes

1.1



21MP
Clamp X Male NPT Adapter



Size	A	
	inch	mm
0.5"	1.625	41.3
0.75"	1.787	45.4
1"	2.250	57.2
1.5"	2.250	57.2
2"	2.638	67.0
2.5"	2.875	73.0
3"	3.070	78.0
4"	3.155	80.1

**T304 and T316L are available.

NOTE! Treatment: Annealed.

**All measurements are in millimeters (mm)
Conversion to inches, 25.4mm=1inch



TUBES AND FITINGS

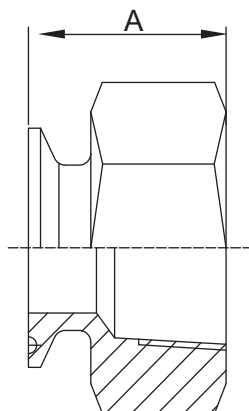
- 3A sanitary finish ID and OD
- Other finishes are available
- Connections: Clamp ends

A³ **CLAMP FITTINGS**
Part for ASTM A270 tubes

1.1



22MP
Clamp X Female NPT Adapter



Size	A	
	inch	mm
0.5"	1.500	38.1
0.75"	1.625	41.3
1"	1.625	41.3
1.5"	2.250	57.1
2"	2.406	61.1
2.5"	2.187	55.5
3"	2.187	55.5
4"	2.625	66.7

**T304 and T316L are available.

**All measurements are in millimeters (mm)
Conversion to inches, 25.4mm=1inch



TUBES AND FITINGS



CLAMP FITTINGS

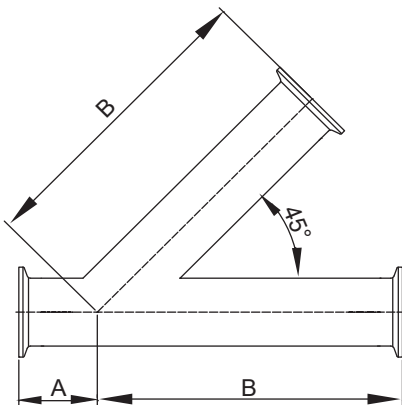
Part for ASTM A270 tubes

- 3A sanitary finish ID and OD
- Other finishes are available
- Connections: Clamp ends

1.1



28AMP
45 Degree Clamp End
Lateral WYE



Size	A		B	
	inch	mm	inch	mm
0.5"	1.500	38.1	5.500	139.7
0.75"	1.500	38.1	5.500	139.7
1"	1.500	38.1	5.500	139.7
1.5"	1.687	42.8	6.688	169.9
2"	2.125	54.0	7.625	193.7
2.5"	2.000	50.8	9.000	228.6
3"	2.375	60.3	9.375	238.1
4"	2.640	67.0	11.312	287.3
6"	4.375	111.1	13.250	336.5

**T304 and T316L are available.

NOTE! Treatment: Annealed.

**All measurements are in millimeters (mm)
Conversion to inches, 25.4mm=1inch



TUBES AND FITINGS



CLAMP FITTINGS

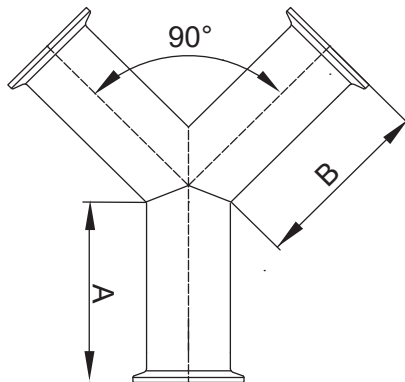
Part for ASTM A270 tubes

- 3A sanitary finish ID and OD
- Other finishes are available
- Connections: Clamp ends

1.1



28BMP
Clamp End True Y



Size	A		B	
	inch	mm	inch	mm
1"	2.500	63.5	2.938	74.6
1.5"	2.500	63.5	2.938	74.6
2"	3.125	79.4	3.750	95.25
2.5"	3.870	98.3	4.625	117.5
3"	4.500	114.3	5.375	136.5
4"	6.000	152.4	6.000	152.4

**T304 and T316L are available.

**All measurements are in millimeters (mm)
Conversion to inches, 25.4mm=1inch



TUBES AND FITINGS



CLAMP FITTINGS

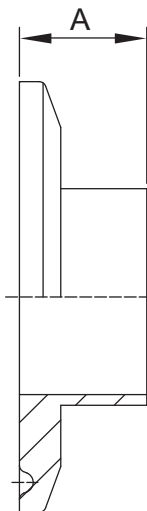
Part for ASTM A270 tubes

- 3A sanitary finish ID and OD
- Other finishes are available
- Connections: Clamp ends

1.1



31WMP
Reducing Ferrule



Size	A	
	inch	mm
0.75"x0.5"	0.500	12.7
1"x0.5"	0.500	12.7
1"x0.75"	0.500	12.7
1.5"x1"	0.500	12.7
1.5"x0.5"	0.500	12.7
1.5"x0.75"	0.500	12.7
2"x1"	0.500	12.7
2"x1.5"	0.500	12.7
2.5"x2"	0.500	12.7
3"x2"	0.500	12.7
4"x3"	0.625	15.9

**T304 and T316L are available.

NOTE! Treatment: Annealed.

**All measurements are in millimeters (mm)
Conversion to inches, 25.4mm=1inch



TUBES AND FITINGS

- 3A sanitary finish ID and OD
- Other finishes are available
- Connections: Clamp ends



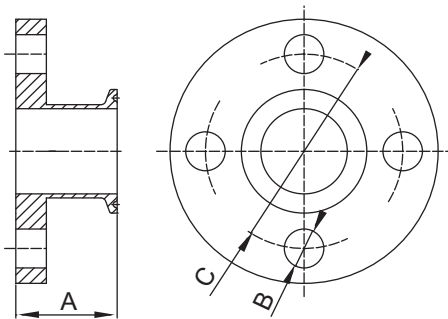
CLAMP FITTINGS

Part for ASTM A270 tubes

1.1



Flange Adapter -
Clamp X Flange



Size	A		B		C	
	inch	mm	inch	mm	inch	mm
1"	1.625	41.3	0.625	15.9	3.125	79.4
1.5"	1.625	41.3	0.625	15.9	3.875	98.4
2"	1.750	44.4	0.750	19.0	4.750	120.6
2.5"	1.750	44.4	0.750	19.0	5.500	139.7
3"	1.750	44.4	0.750	19.0	6.000	152.4
4"	1.750	44.4	0.750	19.0	7.500	190.5
6"	2.188	55.6	0.875	22.2	9.500	241.3

**T304 and T316L are available.

**All measurements are in millimeters (mm)
Conversion to inches, 25.4mm=1inch



TUBES AND FITINGS

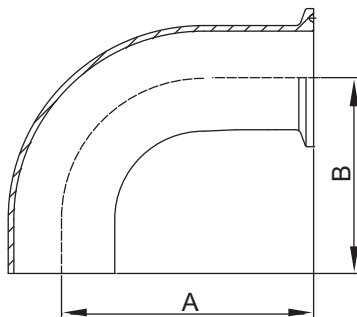
- 3A sanitary finish ID and OD
- Other finishes are available
- Connections: Clamp ends

A³ **CLAMP FITTINGS**
Part for ASTM A270 tubes

1.1



L2CM
Weld X Tri-Clamp 90
Degree Elbow



Size	A		B	
	inch	mm	inch	mm
1"	2.563	65.1	2.063	52.4
1.5"	3.438	87.3	2.938	74.6
2"	4.563	115.9	4.063	103.2
2.5"	5.688	144.5	5.188	131.8
3"	6.813	173.0	6.313	160.3
4"	8.938	227.0	8.313	211.1

**T304 and T316L are available.

NOTE! Treatment: Annealed.

**All measurements are in millimeters (mm)
Conversion to inches, 25.4mm=1inch



CLAMP FITTINGS

Part for ASTM A270 tubes

TUBES AND FITINGS

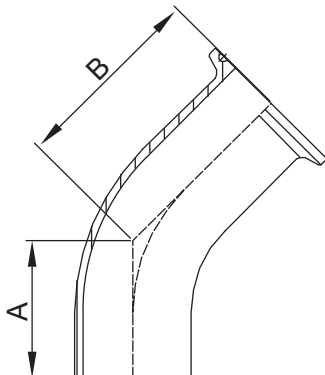
- 3A sanitary finish ID and OD
- Other finishes are available
- Connections: Clamp ends



1.1



L2KM
Clamp X Weld 45 Degree Elbow



Size	A		B	
	inch	mm	inch	mm
1"	1.188	30.2	1.688	42.9
1.5"	1.625	41.3	2.125	54.0
2"	2.312	58.7	2.812	71.4
2.5"	3.000	76.2	3.500	88.9
3"	3.688	93.7	4.188	106.4
4"	4.812	122.2	5.437	138.1

**T304 and T316L are available.

**All measurements are in millimeters (mm)
Conversion to inches, 25.4mm=1inch



TUBES AND FITINGS



CLAMP FITTINGS

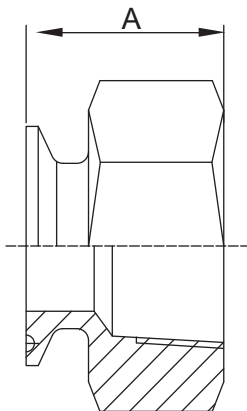
Part for ASTM A270 tubes

- 3A sanitary finish ID and OD
- Other finishes are available
- Connections: Clamp ends

1.1



22MP
Clamp X Female NPT Adapter



Size	A	
	inch	mm
0.5"	1.500	38.1
0.75"	1.625	41.3
1"	1.625	41.3
1.5"	2.250	57.1
2"	2.406	61.1
2.5"	2.187	55.5
3"	2.187	55.5
4"	2.625	66.7

**T304 and T316L are available.

NOTE! Treatment: Annealed.

**All measurements are in millimeters (mm)
Conversion to inches, 25.4mm=1inch



CLAMP FITTINGS

Part for ASTM A270 tubes

TUBES AND FITINGS

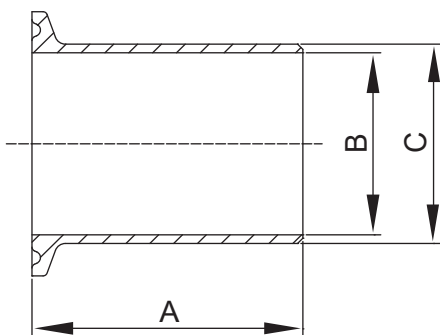
- 3A sanitary finish ID and OD
- Other finishes are available
- Connections: Clamp ends



1.1



TL14AM7
Automatic Weld Ferrules



Size	A		B		C	
	inch	mm	inch	mm	inch	mm
0.5"	1.750	44.4	0.370	9.4	0.500	12.7
0.75	1.750	44.4	0.620	15.7	0.750	19.05
1"	1.750	44.4	0.870	22.1	1.000	25.4
1.5"	1.750	44.4	1.370	34.8	1.500	38.1
2"	2.250	57.1	1.870	47.5	2.000	50.8
2.5"	2.250	57.1	2.370	60.2	2.500	63.5
3"	2.250	57.1	2.870	72.9	3.000	76.2
4"	2.250	57.1	3.834	97.4	4.000	101.6
6"	3.000	76.2	5.782	146.9	6.000	152.4

**T304 and T316L are available.

**All measurements are in millimeters (mm)
Conversion to inches, 25.4mm=1inch



TUBES AND FITINGS

A³ CLAMP FITTINGS

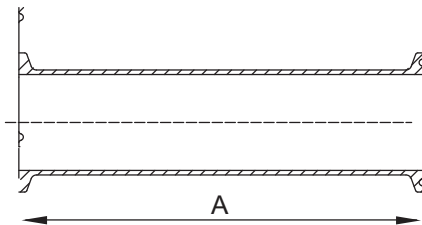
Part for ASTM A270 tubes

- 3A sanitary finish ID and OD
- Other finishes are available
- Connections: Clamp ends

1.1



Spool Assembly



Size	A	
	inch	mm
0.5"	2.250	57.1
0.75	2.250	57.1
1"	2.250	57.1
1.5"	2.250	57.1
2"	2.250	57.1
2.5"	2.250	57.1
3"	2.250	57.1
4"	2.250	57.1
6"	3.000	76.2

**T304 and T316L are available.

NOTE! Treatment: Annealed.

**All measurements are in millimeters (mm)
Conversion to inches, 25.4mm=1inch



CLAMP FITTINGS

Part for ASTM A270 tubes

TUBES AND FITINGS

- 3A sanitary finish ID and OD
- Other finishes are available
- Connections: Clamp ends

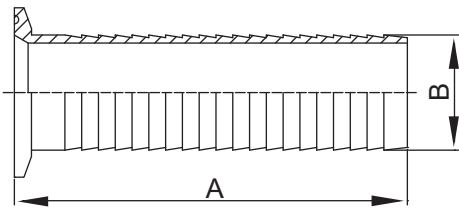


1.1



14MPHRL

Brewery Hose Barb Adapters



Size	A		B	
	inch	mm	inch	mm
1"	3.500	88.9	1.045	26.5
1.5"	5.000	127.0	1.545	39.2
2"	5.000	127.0	2.045	51.9
2.5"	5.500	139.7	2.545	64.6
3"	5.500	139.7	3.045	77.3
4"	5.500	139.7	4.045	102.7

**T304 and T316L are available.

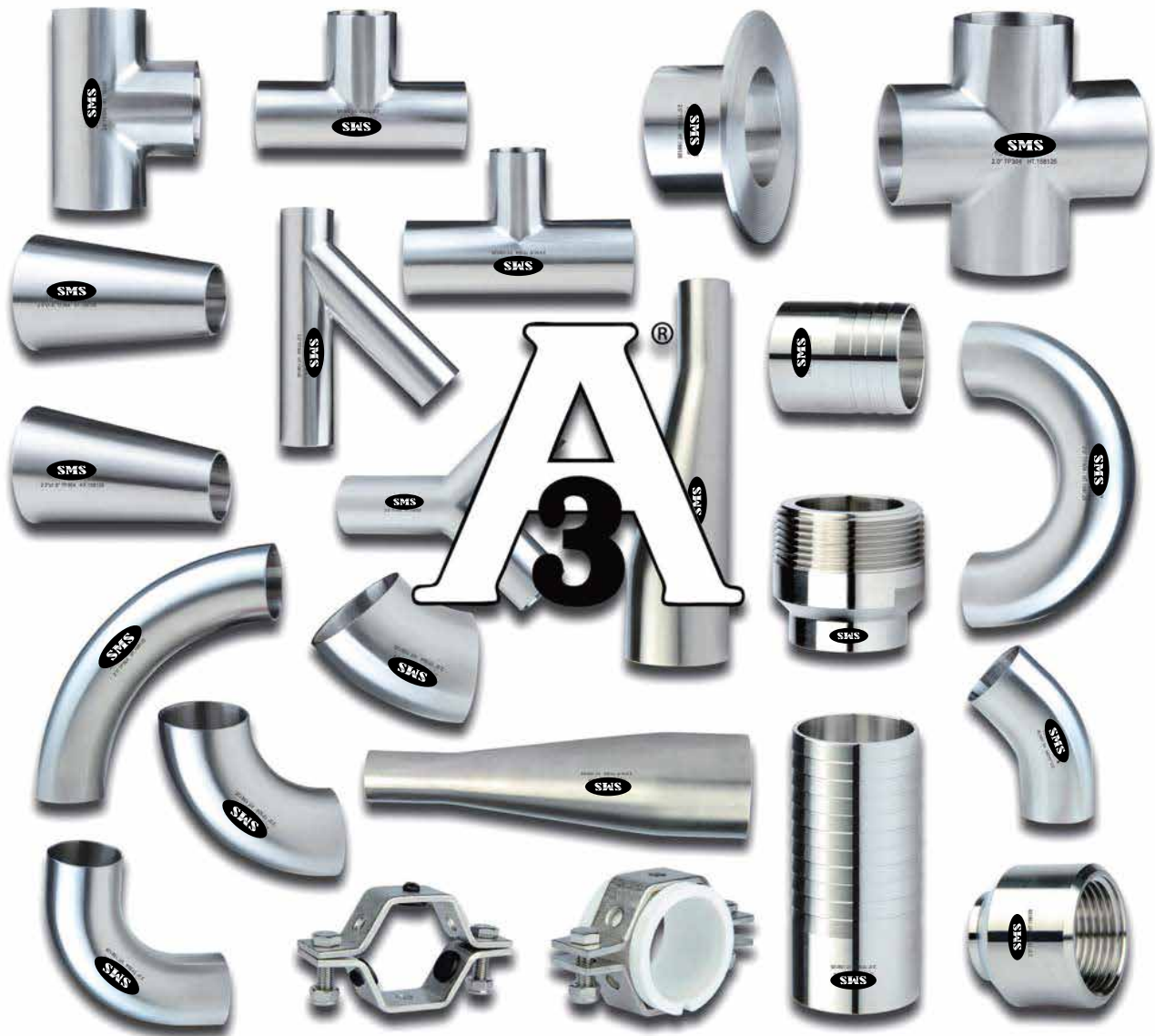
**All measurements are in millimeters (mm)
Conversion to inches, 25.4mm=1inch



WELD FITTINGS

Weld to the ASTM A270 tubing

1.2





TUBES AND FITINGS



WELDING FITTINGS

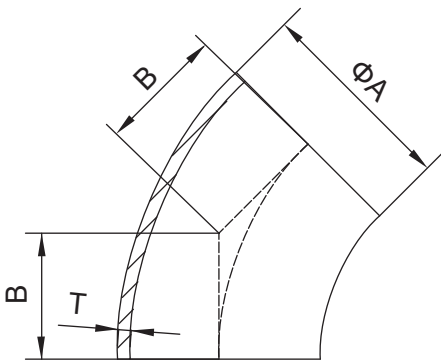
Part for ASTM A270 tubes

- 3A sanitary finish ID and OD
- Other finishes are available
- Connections: Welding ends

1.2



2WK
Bend 45°, No Tangent



Size	A		B		T	
	inch	mm	inch	mm	inch	mm
0.5"	0.500	12.7	0.466	11.8	0.065	1.65
0.75"	0.750	19.05	0.466	11.8	0.065	1.65
1.0"	1.000	25.4	0.625	15.9	0.065	1.65
1.5"	1.500	38.1	0.937	23.8	0.065	1.65
2.0"	2.000	50.8	1.250	31.7	0.065	1.65
2.5"	2.500	63.5	1.562	39.6	0.065	1.65
3.0"	3.000	76.2	1.875	47.6	0.065	1.65
4.0"	4.000	101.6	2.500	63.5	0.083	2.11
6.0"	6.000	152.4	3.750	95.3	0.109	2.77
8.0"	8.000	203.2	5.000	127.0	0.120	3.05
10.0"	10.000	254.0	6.250	158.8	0.120	3.05
12.0"	12.000	304.8	7.500	190.5	0.120	3.05

**T304 and T316L are available.

**All measurements are in millimeters (mm)
Conversion to inches, 25.4mm=1inch



TUBES AND FITINGS

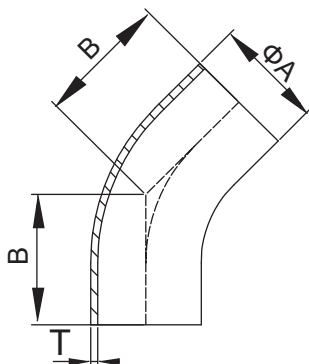
- 3A sanitary finish ID and OD
- Other finishes are available
- Connections: Welding ends

A³ **WELDING FITTINGS**
Part for ASTM A270 tubes

1.2



L2KS
Polished Long Elbow 45 Degree
With Tangent



Size	A		B		T	
	inch	mm	inch	mm	inch	mm
1.0"	1.000	25.4	1.189	30.2	0.065	1.65
1.5"	1.500	38.1	1.626	41.3	0.065	1.65
2.0"	2.000	50.8	2.311	58.7	0.065	1.65
2.5"	2.500	63.5	3.000	76.2	0.065	1.65
3.0"	3.000	76.2	3.689	93.7	0.065	1.65
4.0"	4.000	101.6	4.811	122.2	0.083	2.11

**T304 and T316L are available.

NOTE! Treatment: Annealed.

**All measurements are in millimeters (mm)
Conversion to inches, 25.4mm= 1inch



TUBES AND FITINGS



WELDING FITTINGS

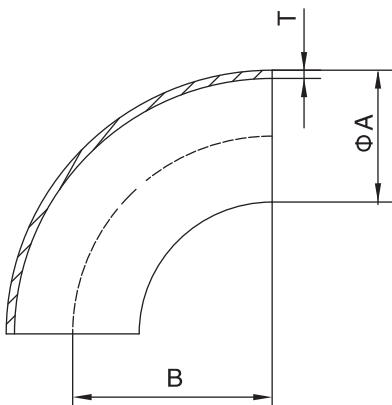
Part for ASTM A270 tubes

- 3A sanitary finish ID and OD
- Other finishes are available
- Connections: Welding ends

1.2



2WCL
Elbow 90°, No Tangent



Size	A		B		T	
	inch	mm	inch	mm	inch	mm
0.5"	0.500	12.7	1.125	28.6	0.065	1.65
0.75"	0.750	19.05	1.125	28.6	0.065	1.65
1.0"	1.000	25.4	1.500	38.1	0.065	1.65
1.5"	1.500	38.1	2.250	57.2	0.065	1.65
2.0"	2.000	50.8	3.000	76.2	0.065	1.65
2.5"	2.500	63.5	3.750	95.25	0.065	1.65
3.0"	3.000	76.2	4.500	114.3	0.065	1.65
4.0"	4.000	101.6	6.000	152.4	0.083	2.11
6.0"	6.000	152.4	9.000	228.6	0.109	2.77
8.0"	8.000	203.2	12.000	304.8	0.120	3.05
10.0"	10.000	254.0	15.000	381.0	0.120	3.05
12.0"	12.000	304.8	18.000	457.2	0.120	3.05

**T304 and T316L are available.

**All measurements are in millimeters (mm)
Conversion to inches, 25.4mm=1inch



TUBES AND FITINGS

- 3A sanitary finish ID and OD
- Other finishes are available
- Connections: Welding ends



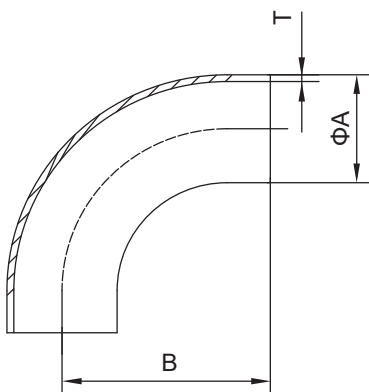
WELDING FITTINGS

Part for ASTM A270 tubes

1.2



L2S
Long Elbow 90 Degree,
With Tangent



Size	A		B		T	
	inch	mm	inch	mm	inch	mm
1.0"	1.000	25.4	2.063	52.4	0.065	1.65
1.5"	1.500	38.1	2.937	74.6	0.065	1.65
2.0"	2.000	50.8	4.063	103.2	0.065	1.65
2.5"	2.500	63.5	5.189	131.8	0.065	1.65
3.0"	3.000	76.2	6.311	160.3	0.065	1.65
4.0"	4.000	101.6	8.311	211.1	0.083	2.11

**T304 and T316L are available.

NOTE! Treatment: Annealed.

**All measurements are in millimeters (mm)
Conversion to inches, 25.4mm=1inch



TUBES AND FITINGS

- 3A sanitary finish ID and OD
- Other finishes are available
- Connections: Welding ends



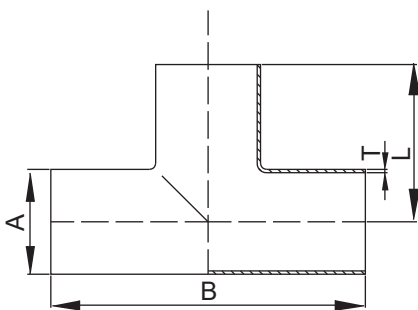
WELDING FITTINGS

Part for ASTM A270 tubes

1.2



7W
Long Equal Tee, With Tangent



Size	A		B		L		T	
	inch	mm	inch	mm	inch	mm	inch	mm
0.5"	0.500	12.7	3.750	95.2	1.875	47.6	0.065	1.65
0.75"	0.750	19.05	4.000	101.6	2.000	50.8	0.065	1.65
1.0"	1.000	25.4	3.750	95.2	1.875	47.6	0.065	1.65
1.5"	1.500	38.1	4.500	114.3	2.250	57.2	0.065	1.65
2.0"	2.000	50.8	6.000	152.4	3.000	76.2	0.065	1.65
2.5"	2.500	63.5	6.000	152.4	3.000	76.2	0.065	1.65
3.0"	3.000	76.2	6.500	165.2	3.250	82.6	0.065	1.65
4.0"	4.000	101.6	7.750	196.8	3.875	98.4	0.083	2.11
6.0"	6.000	152.4	11.250	285.7	5.625	142.9	0.109	2.77
8.0"	8.000	203.2	14.000	355.6	7.000	177.8	0.120	3.05

**T304 and T316L are available.

**All measurements are in millimeters (mm)
Conversion to inches, 25.4mm= 1inch



TUBES AND FITTINGS

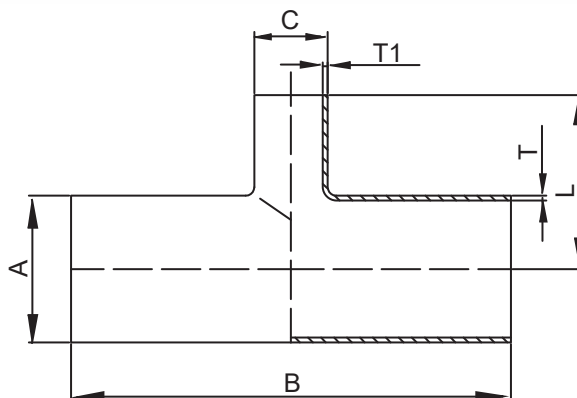


WELDING FITTINGS

Part for ASTM A270 tubes

- 3A sanitary finish ID and OD
- Other finishes are available
- Connections: Welding ends

1.2



7RW
Long Reducing Tee

Size	A		C		B		L		T		T1	
	inch	mm	inch	mm	inch	mm	inch	mm	inch	mm	inch	mm
1.5"×1.0"	1.500	38.1	1.000	25.4	4.500	114.3	2.125	54.0	0.065	1.65	0.065	mm
2.0"×1.0"	2.000	50.8	1.000	25.4	6.000	152.4	2.374	60.3	0.065	1.65	0.065	1.65
2.0"×1.5"	2.000	50.8	1.500	38.1	6.000	152.4	2.500	63.5	0.065	1.65	0.065	1.65
2.5"×1.5"	2.500	63.5	1.500	38.1	6.000	152.4	2.750	69.8	0.065	1.65	0.065	1.65
2.5"×2.0"	2.500	63.5	2.000	50.8	6.000	152.4	3.250	82.5	0.065	1.65	0.065	1.65
3.0"×1.5"	3.000	76.2	1.500	38.1	6.500	165.1	3.000	76.2	0.065	1.65	0.065	1.65
3.0"×2.0"	3.000	76.2	2.000	50.8	6.500	165.1	3.500	88.9	0.065	1.65	0.065	1.65
3.0"×2.5"	3.000	76.2	2.500	63.5	6.500	165.1	3.250	82.5	0.065	1.65	0.065	1.65
4.0"×2.0"	4.000	101.6	2.000	50.8	7.750	196.8	4.000	101.6	0.083	2.11	0.065	1.65
4.0"×2.5"	4.000	101.6	2.500	63.5	7.750	196.8	3.750	95.2	0.083	2.11	0.065	1.65
4.0"×3.0"	4.000	101.6	3.000	76.2	7.750	196.8	3.750	95.2	0.083	2.11	0.065	1.65

**T304 and T316L are available.

NOTE! Treatment: Annealed.

**All measurements are in millimeters (mm)
Conversion to inches, 25.4mm=1inch



TUBES AND FITINGS

- 3A sanitary finish ID and OD
- Other finishes are available
- Connections: Welding ends



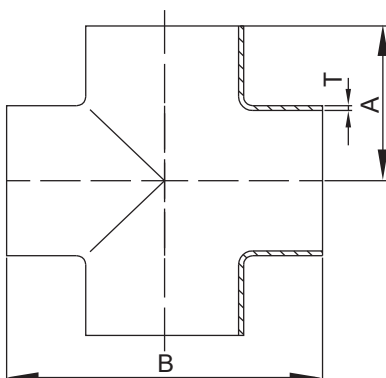
WELDING FITTINGS

Part for ASTM A270 tubes

1.2



9WWWW
Short Equal Cross



Size	B		A		T	
	inch	mm	inch	mm	inch	mm
1.0"	2.250	57.2	1.125	28.6	0.065	1.65
1.5"	3.312	84.2	1.656	42.1	0.065	1.65
2.0"	4.125	104.6	2.062	52.4	0.065	1.65
2.5"	4.687	119.0	2.343	59.5	0.065	1.65
3.0"	5.187	131.8	2.593	65.9	0.065	1.65
4.0"	6.875	174.6	3.437	87.3	0.083	2.11

**T304 and T316L are available.

**All measurements are in millimeters (mm)
Conversion to inches, 25.4mm=1inch



TUBES AND FITINGS



WELDING FITTINGS

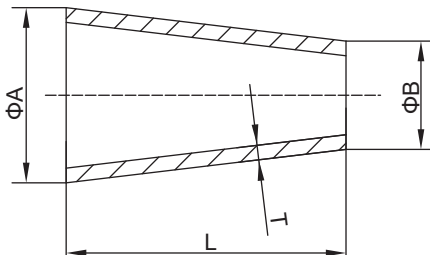
Part for ASTM A270 tubes

- 3A sanitary finish ID and OD
- Other finishes are available
- Connections: Welding ends

1.2



31W
Concentric Reducer
Butt Weld



Size	A		B		L		T	
	inch	mm	inch	mm	inch	mm	inch	mm
1.5"×1.0"	1.500	38.1	1.000	25.4	2.000	50.8	0.065	1.65
2.0"×1.0"	2.000	50.8	1.000	25.4	4.000	101.6	0.065	1.65
2.0"×1.5"	2.000	50.8	1.500	38.1	2.000	50.8	0.065	1.65
2.5"×1.0"	2.500	63.5	1.000	25.4	6.000	152.4	0.065	1.65
2.5"×1.5"	2.500	63.5	1.500	38.1	4.000	101.6	0.065	1.65
2.5"×2.0"	2.500	63.5	2.000	50.8	2.000	50.8	0.065	1.65
3.0"×1.0"	3.000	76.2	1.000	25.4	8.000	203.2	0.065	1.65
3.0"×1.5"	3.000	76.2	1.500	38.1	6.000	152.4	0.065	1.65
3.0"×2.0"	3.000	76.2	2.000	50.8	4.000	101.6	0.065	1.65
3.0"×2.5"	3.000	76.2	2.500	63.5	2.000	50.8	0.065	1.65
4.0"×1.5"	4.000	101.6	1.500	38.1	10.000	254.0	0.083	2.11
4.0"×2.0"	4.000	101.6	2.000	50.8	8.000	203.2	0.083	2.11
4.0"×2.5"	4.000	101.6	2.500	63.5	6.000	152.4	0.083	2.11
4.0"×3.0"	4.000	101.6	3.000	76.2	4.000	101.6	0.083	2.11

**T304 and T316L are available.

NOTE! Treatment: Annealed.

**All measurements are in millimeters (mm)
Conversion to inches, 25.4mm=1inch



TUBES AND FITINGS

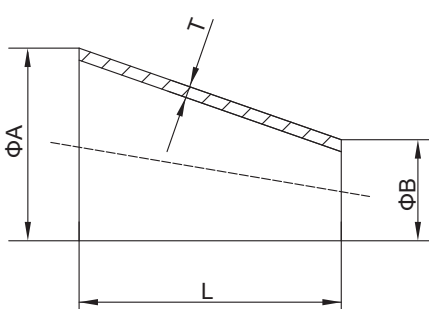
- 3A sanitary finish ID and OD
- Other finishes are available
- Connections: Welding ends

A³ WELDING FITTINGS
Part for ASTM A270 tubes

1.2



32W
Eccentric Reducer
Butt Weld



Size	A		B		L		T	
	inch	mm	inch	mm	inch	mm	inch	mm
1.5"×1.0"	1.500	38.1	1.000	25.4	2.000	50.8	0.065	1.65
2.0"×1.0"	2.000	50.8	1.000	25.4	4.000	101.6	0.065	1.65
2.0"×1.5"	2.000	50.8	1.500	38.1	2.000	50.8	0.065	1.65
2.5"×1.0"	2.500	63.5	1.000	25.4	6.000	152.4	0.065	1.65
2.5"×1.5"	2.500	63.5	1.500	38.1	4.000	101.6	0.065	1.65
2.5"×2.0"	2.500	63.5	2.000	50.8	2.000	50.8	0.065	1.65
3.0"×1.0"	3.000	76.2	1.000	25.4	8.000	203.2	0.065	1.65
3.0"×1.5"	3.000	76.2	1.500	38.1	6.000	152.4	0.065	1.65
3.0"×2.0"	3.000	76.2	2.000	50.8	4.000	101.6	0.065	1.65
3.0"×2.5"	3.000	76.2	2.500	63.5	2.000	50.8	0.065	1.65
4.0"×1.5"	4.000	101.6	1.500	38.1	10.000	254.0	0.083	2.11
4.0"×2.0"	4.000	101.6	2.000	50.8	8.000	203.2	0.083	2.11
4.0"×2.5"	4.000	101.6	2.500	63.5	6.000	152.4	0.083	2.11
4.0"×3.0"	4.000	101.6	3.000	76.2	4.000	101.6	0.083	2.11

**T304 and T316L are available.

**All measurements are in millimeters (mm)
Conversion to inches, 25.4mm=1inch



TUBES AND FITINGS

- 3A sanitary finish ID and OD
- Other finishes are available
- Connections: Welding ends

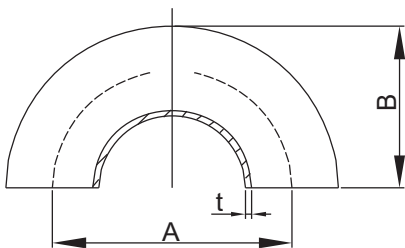
A³ WELDING FITTINGS

Part for ASTM A270 tubes

1.2



2WU
180 Degree Return Bend
Weld End



Size	A		B		T	
	inch	mm	inch	mm	inch	mm
1"	3.000	76.2	2.000	50.8	0.065	1.65
1.5"	4.500	114.3	3.000	76.2	0.065	1.65
2"	6.000	152.4	4.000	101.6	0.065	1.65
2.5"	7.500	190.5	5.000	127	0.065	1.65
3"	9.000	228.6	6.000	152.4	0.065	1.65
4"	12.000	304.8	8.000	203.2	0.083	2.11

**T304 and T316L are available.

NOTE! Treatment: Annealed.

**All measurements are in millimeters (mm)
Conversion to inches, 25.4mm=1inch



TUBES AND FITINGS



WELDING FITTINGS

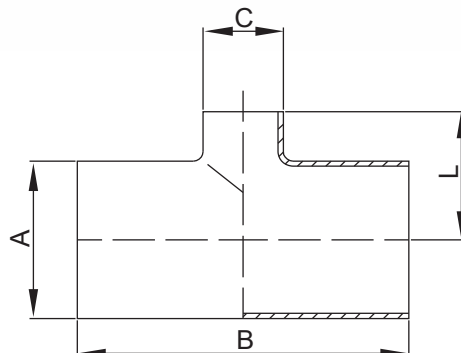
Part for ASTM A270 tubes

- 3A sanitary finish ID and OD
- Other finishes are available
- Connections: Welding ends

1.2



7RWWW
Short Reducing Tee



Size	A		B		C		L	
	inch	mm	inch	mm	inch	mm	inch	mm
0.75"x0.5"	.750	19.0	4.000	101.6	0.500	12.7	2.000	50.8
1"x0.5"	1.000	25.4	4.250	107.9	0.500	12.7	2.125	54.0
1"x0.75"	1.000	25.4	4.250	107.9	0.750	19.0	2.125	54.0
1.5"x0.5"	1.500	38.1	4.750	120.6	0.500	12.7	2.375	60.3
1.5"x0.75"	1.500	38.1	4.750	120.6	0.750	19.0	2.375	60.3
1.5"x1"	1.500	38.1	3.312	84.12	1.000	25.4	1.375	34.9
2"x0.5"	2.000	50.8	5.750	146.0	0.500	12.7	2.625	66.7
2"x0.75"	2.000	50.8	5.750	146.0	0.750	19.0	2.625	66.7
2"x1"	2.000	50.8	4.124	104.7	1.000	25.4	1.625	41.3
2"x1.5"	2.000	50.8	4.124	104.7	1.500	38.1	1.906	48.4
2.5"x1.5"	2.500	63.5	4.688	119.1	1.500	38.1	2.156	54.8
2.5"x2"	2.500	63.5	4.688	119.1	2.000	50.8	2.312	58.7
3"x1.5"	3.000	76.2	5.188	131.8	1.500	38.1	2.406	61.1
3"x2"	3.000	76.2	5.188	131.8	2.000	50.8	2.562	65.1
3"x2.5"	3.000	76.2	5.188	131.8	2.500	63.5	2.594	65.9
4"x1.5"	4.000	101.6	6.876	174.6	1.500	38.1	2.906	73.8
4"x2"	4.000	101.6	6.876	174.6	2.000	50.8	3.062	77.8
4"x2.5"	4.000	101.6	6.876	174.6	2.500	63.5	3.094	78.6
4"x3"	4.000	101.6	6.876	174.6	3.000	76.2	3.094	78.6
6"x2"	6.000	152.4	11.250	285.7	2.000	50.8	4.500	114.3
6"x3"	6.000	152.4	11.250	285.7	3.000	76.2	4.875	123.8
6"x4"	6.000	152.4	11.250	285.7	4.000	101.6	5.125	130.2

**T304 and T316L are available.

**All measurements are in millimeters (mm)
Conversion to inches, 25.4mm=1inch



TUBES AND FITTINGS

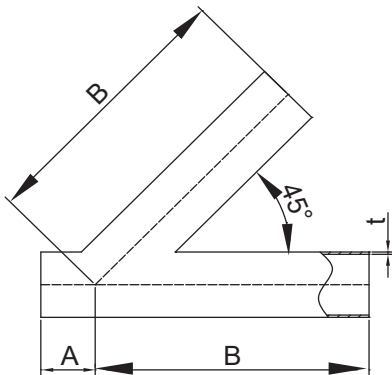
- 3A sanitary finish ID and OD
- Other finishes are available
- Connections: Welding ends

A³ WELDING FITTINGS
Part for ASTM A270 tubes

1.2



28WA
45 Degree Butt Weld Lateral Wye



Size	A		B		T	
	inch	mm	inch	mm	inch	mm
1"	1.000	25.4	5.000	127.0	0.065	1.65
1.5"	1.188	30.2	6.188	157.2	0.065	1.65
2"	1.625	41.3	7.125	181.0	0.065	1.65
2.5"	1.500	38.1	8.500	215.9	0.065	1.65
3"	1.875	47.6	8.875	225.4	0.065	1.65
4"	2.015	51.2	10.750	273.0	0.083	2.11

**T304 and T316L are available.

NOTE! Treatment: Annealed.

**All measurements are in millimeters (mm)
Conversion to inches, 25.4mm= 1inch



TUBES AND FITINGS



WELDING FITTINGS

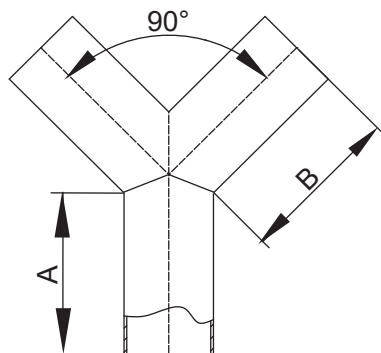
Part for ASTM A270 tubes

- 3A sanitary finish ID and OD
- Other finishes are available
- Connections: Welding ends

1.2



28WB
True Wye Butt Weld Ends



Size	A		B	
	inch	mm	inch	mm
1"	2.000	50.8	2.438	61.9
1.5"	2.000	50.8	2.438	61.9
2"	2.625	66.7	3.250	82.5
2.5"	3.370	85.6	4.125	104.8
3"	4.000	101.6	4.875	123.8
4"	5.375	136.5	5.375	136.5

**T304 and T316L are available.

**All measurements are in millimeters (mm)
Conversion to inches, 25.4mm=1inch



WELDING FITTINGS

Part for ASTM A270 tubes

TUBES AND FITTINGS

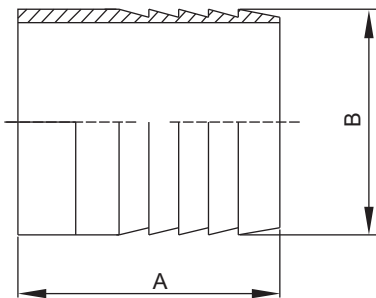
- 3A sanitary finish ID and OD
- Other finishes are available
- Connections: Welding ends



1.2



14WHR
Weld Hose Adapters



Size	A		B	
	inch	mm	inch	mm
0.5"	1.500	38.1	0.500	12.7
0.75"	1.500	38.1	0.750	19.05
1"	1.688	42.9	1.000	25.4
1.5"	1.688	42.9	1.500	38.1
2"	2.312	58.7	2.000	50.8
2.5"	2.000	50.8	2.500	63.5
3"	3.093	78.6	3.000	76.2
4"	3.406	86.5	4.000	101.6

**T304 and T316L are available.

NOTE! Treatment: Annealed.

**All measurements are in millimeters (mm)
Conversion to inches, 25.4mm=1inch



WELDING FITTINGS

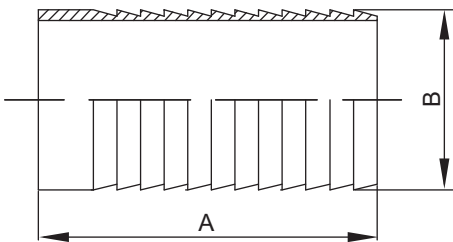
Part for ASTM A270 tubes

TUBES AND FITINGS

- 3A sanitary finish ID and OD
- Other finishes are available
- Connections: Welding ends



14WHRL
Long Weld Hose Adapters



Size	A		B	
	inch	mm	inch	mm
1"	3.000	76.2	1.030	26.2
1.5"	4.500	114.3	1.530	38.9
2"	4.500	114.3	2.030	51.6
2.5"	5.000	127.0	2.530	64.2
3"	5.000	127.0	3.030	77.0
4"	4.875	123.8	4.030	102.4

**T304 and T316L are available.

**All measurements are in millimeters (mm)
Conversion to inches, 25.4mm=1inch



WELDING FITTINGS

Part for ASTM A270 tubes

TUBES AND FITINGS

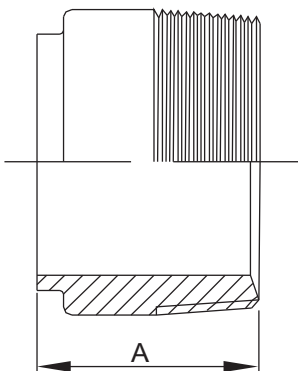
- 3A sanitary finish ID and OD
- Other finishes are available
- Connections: Welding ends



1.2



19WB
Weld X Male NPT Adapter



Size	A	
	inch	mm
0.5"	1.625	41.3
0.75"	1.625	41.3
1"	1.750	44.4
1.5"	1.750	44.4
2"	1.812	46.0
2.5"	2.312	58.7
3"	2.500	63.5
4"	2.562	65.1

**T304 and T316L are available.

NOTE! Treatment: Annealed.

**All measurements are in millimeters (mm)
Conversion to inches, 25.4mm=1inch



TUBES AND FITINGS



WELDING FITTINGS

Part for ASTM A270 tubes

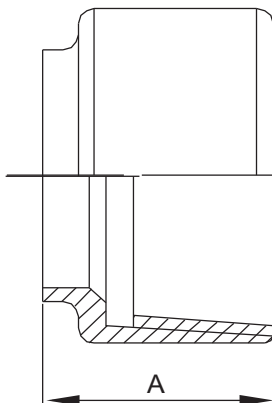
- 3A sanitary finish ID and OD
- Other finishes are available
- Connections: Welding ends

1.2



22WB

Weld X Female NPT Adapter



Size	A	
	inch	mm
0.5"	1.250	31.7
0.75"	1.625	41.3
1"	1.750	44.4
1.5"	1.750	44.4
2"	1.812	46.0
2.5"	2.312	58.7
3"	2.500	63.5
4"	2.500	63.5

**T304 and T316L are available.

**All measurements are in millimeters (mm)
Conversion to inches, 25.4mm=1inch



WELDING FITTINGS

Part for ASTM A270 tubes

TUBES AND FITINGS

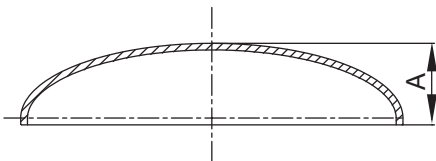
- 3A sanitary finish ID and OD
- Other finishes are available
- Connections: Welding ends



1.2



16W
Butt Weld Dome Cap



Size	A	
	inch	mm
1"	0.375	9.5
1.5"	0.562	14.3
2"	0.750	19.05
2.5"	1.000	25.4
3"	1.250	31.7
4"	1.500	38.1
6"	1.875	47.6
8"	2.500	63.5

**T304 and T316L are available.

NOTE! Treatment: Annealed.

**All measurements are in millimeters (mm)
Conversion to inches, 25.4mm=1inch



WELDING FITTINGS

Part for ASTM A270 tubes

TUBES AND FITINGS

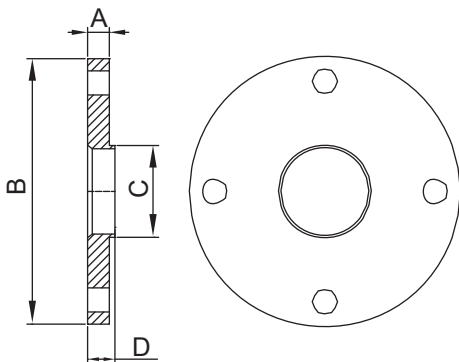
- 3A sanitary finish ID and OD
- Other finishes are available
- Connections: Welding ends



1.2



38W
Weld Neck Flanges



Size	A		B		C		D	
	inch	mm	inch	mm	inch	mm	inch	mm
1"	0.375	9.5	4.250	107.9	1.000	25.4	0.500	12.7
1.5"	0.375	9.5	5.000	127.0	1.500	38.1	0.500	12.7
2"	0.500	12.7	6.000	152.4	2.000	50.8	0.625	15.9
2.5"	0.500	12.7	7.000	177.8	2.500	63.5	0.625	15.9
3"	0.500	12.7	7.500	190.5	3.000	76.2	0.625	15.9
4"	0.500	12.7	9.000	228.6	4.000	101.6	0.625	15.9
6"	0.500	12.7	11.000	279.4	6.000	152.4	0.625	15.9
8"	0.500	12.7	13.500	342.9	8.000	203.2	0.625	15.9
10"	0.500	12.7	16.000	406.4	10.000	254.0	0.625	15.9

**T304 and T316L are available.

**All measurements are in millimeters (mm)
Conversion to inches, 25.4mm=1inch



WELDING FITTINGS

Part for ASTM A270 tubes

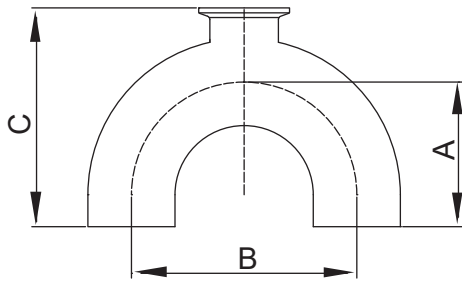
TUBES AND FITINGS



- 3A sanitary finish ID and OD
- Other finishes are available
- Connections: Welding ends

1.2

180 Degree Bottom Outlet Use Point Fitting



Size	A		B		C	
	inch	mm	inch	mm	inch	mm
1"x0.5"	3.750	95.25	4.500	114.3	5.000	127.0
1"x0.75"	3.750	95.25	4.500	114.3	5.000	127.0
1.5"x0.5"	4.500	114.3	6.000	152.4	6.000	152.4
1.5"x0.75"	4.500	114.3	6.000	152.4	6.000	152.4
1.5"x1"	4.500	114.3	6.000	152.4	6.130	155.7
2"x0.5"	5.000	127.0	6.000	152.4	6.750	171.5
2"x0.75"	5.000	127.0	6.000	152.4	6.750	171.5
2"x1"	5.000	127.0	6.000	152.4	7.000	177.8
2"x1.5"	5.000	127.0	6.000	152.4	6.750	171.5
2.5"x0.5"	5.750	146.0	7.500	190.5	7.750	196.9
2.5"x0.75"	5.750	146.0	7.500	190.5	7.750	196.9
2.5"x1"	5.750	146.0	7.500	190.5	7.940	201.7
2.5"x1.5"	5.750	146.0	7.500	190.5	7.750	196.9
2.5"x2"	5.750	146.0	7.500	190.5	8.130	206.5
3"x0.5"	6.500	165.1	9.000	228.6	8.750	222.3
3"x0.75"	6.500	165.1	9.000	228.6	8.750	222.3
3"x1"	6.500	165.1	9.000	228.6	9.000	228.6
3"x1.5"	6.500	165.1	9.000	228.6	8.810	223.8
3"x2"	6.500	165.1	9.000	228.6	8.750	222.3
3"x2.5"	6.500	165.1	9.000	228.6	9.130	231.9
4"x0.5"	8.500	215.9	12.000	304.8	11.25	285.8
4"x0.75"	8.500	215.9	12.000	304.8	11.25	285.8
4"x1"	8.500	215.9	12.000	304.8	11.56	293.6
4"x1.5"	8.500	215.9	12.000	304.8	11.44	290.6
4"x2"	8.500	215.9	12.000	304.8	11.25	285.8
4"x2.5"	8.500	215.9	12.000	304.8	11.63	295.4
4"x3"	8.500	215.9	12.000	304.8	11.63	295.4

**T304 and T316L are available.

NOTE! Treatment: Annealed.

**All measurements are in millimeters (mm)
Conversion to inches, 25.4mm=1inch



WELDING FITTINGS

Part for ASTM A270 tubes

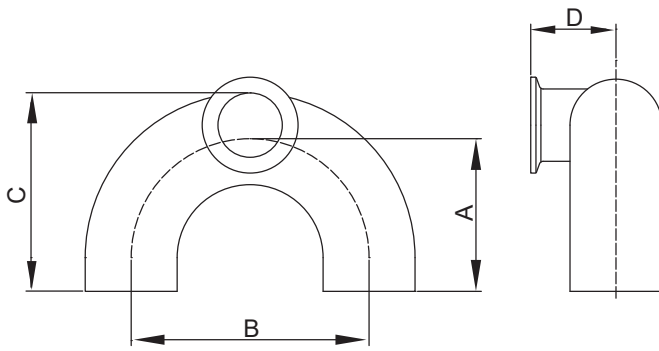
TUBES AND FITTINGS



- 3A sanitary finish ID and OD
- Other finishes are available
- Connections: Welding ends

180 Degree Side Outlet Use-Point Fitting

1.2



Size	A		B		C		D	
	inch	mm	inch	mm	inch	mm	inch	mm
1"x0.75"	3.750	95.2	4.500	114.3	3.880	98.6	1.250	31.8
1.5"x0.75"	4.500	114.3	6.000	152.4	4.880	124.0	1.750	44.5
1.5"x1"	4.500	114.3	6.000	152.4	4.750	120.7	1.750	44.5
2"x0.75"	5.000	127.0	6.000	152.4	5.630	143.0	1.750	44.5
2"x1"	5.000	127.0	6.000	152.4	5.500	139.7	1.750	44.5
2"x1.5"	5.000	127.0	6.000	152.4	5.250	133.4	1.750	44.5
2.5"x1"	5.750	146.0	7.500	190.5	6.500	165.1	1.750	44.5
2.5"x1.5"	5.750	146.0	7.500	190.5	6.250	158.8	1.750	44.5
2.5"x2"	5.750	146.0	7.500	190.5	6.000	152.4	2.250	57.2
3"x1"	6.500	165.1	9.000	228.6	7.500	190.5	2.250	57.2
3"x1.5"	6.500	165.1	9.000	228.6	7.250	184.2	2.250	57.2
3"x2"	6.500	165.1	9.000	228.6	7.000	177.8	2.250	57.2
3"x2.5"	6.500	165.1	9.000	228.6	6.750	171.5	2.250	57.2
4"x1"	8.500	215.9	12.000	304.8	10.000	254.0	-	-
4"x1.5"	8.500	215.9	12.000	304.8	9.750	247.7	-	-
4"x2"	8.500	215.9	12.000	304.8	9.500	241.3	-	-
4"x2.5"	8.500	215.9	12.000	304.8	9.250	235.0	-	-
4"x3"	8.500	215.9	12.000	304.8	9.000	228.6	-	-

**T304 and T316L are available.

**All measurements are in millimeters (mm)
Conversion to inches, 25.4mm=1inch



TUBES AND FITINGS



WELDING FITTINGS

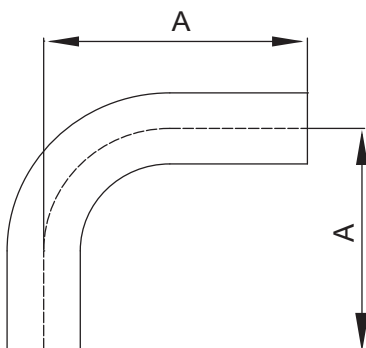
Part for ASTM A270 tubes

- 3A sanitary finish ID and OD
- Other finishes are available
- Connections: Welding ends

1.2



2S
Bend 90°, Automatic Weld



Size	A	
	inch	mm
0.5"	3.000	76.2
0.75"	3.000	76.2
1"	3.000	76.2
1.5"	3.750	95.2
2"	4.750	120.6
2.5"	5.500	139.7
3"	6.250	158.7
4"	8.000	203.2
6"	11.500	292.1

**T304 and T316L are available.

NOTE! Treatment: Annealed.

**All measurements are in millimeters (mm)
Conversion to inches, 25.4mm= 1inch



WELDING FITTINGS

Part for ASTM A270 tubes

TUBES AND FITINGS

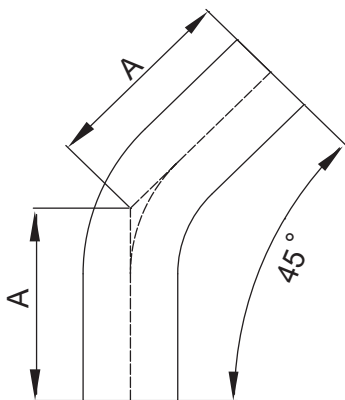
- 3A sanitary finish ID and OD
 - Other finishes are available
- Connections: Welding ends



1.2



2KS
Bend 45°, Automatic Weld



Size	A	
	inch	mm
0.5"	2.250	57.2
0.75"	2.250	57.2
1"	2.250	57.2
1.5"	2.500	63.5
2"	3.000	76.2
2.5"	3.380	85.9
3"	3.630	92.2
4"	4.500	114.3
6"	6.250	158.8

**T304 and T316L are available.

**All measurements are in millimeters (mm)
Conversion to inches, 25.4mm=1inch



TUBES AND FITTINGS



WELDING FITTINGS

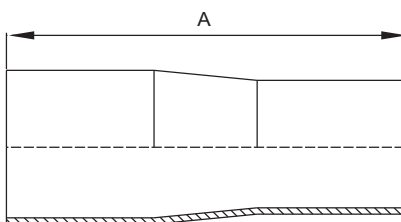
Part for ASTM A270 tubes

- 3A sanitary finish ID and OD
- Other finishes are available
- Connections: Welding ends

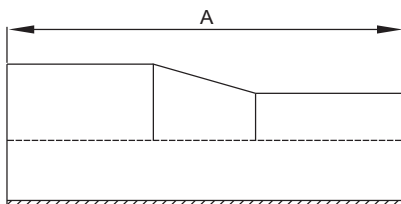
1.2



31
Concentric Reducer
Automatic Weld



32
Eccentric Reducer
Automatic Weld



Size	A	
	inch	mm
0.75"x0.5"	4.000	101.6
1"x0.5"	4.500	114.3
1"x0.75"	4.000	101.6
1.5"x0.5"	5.500	139.7
1.5"x0.75"	5.000	127.0
1.5"x1"	5.000	127.0
2"x0.75"	7.250	184.2
2"x1"	7.250	184.2
2"x1.5"	5.250	133.4
2.5"x1.5"	7.250	184.1
2.5"x2"	5.500	139.7
3"x1.5"	9.250	235.0
3"x2"	7.500	190.5
3"x2.5"	5.500	139.7
4"x2"	11.750	298.5
4"x2.5"	9.750	247.7
4"x3"	7.750	196.9
6"x3"	9.750	247.6
6"x4"	10.000	254.0

**T304 and T316L are available.

NOTE! Treatment: Annealed.

**All measurements are in millimeters (mm)
Conversion to inches, 25.4mm= 1inch



TUBES AND FITINGS

- 3A sanitary finish ID and OD
- Other finishes are available
- Connections: Welding ends



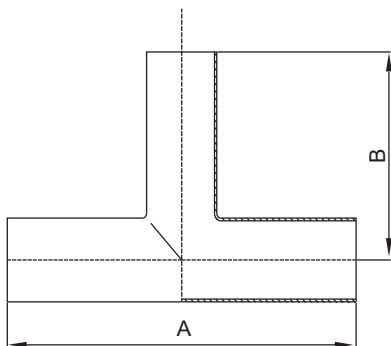
WELDING FITTINGS

Part for ASTM A270 tubes

1.2



T7WWW
Long Tangent Tee
Automatic Weld



Size	A		B	
	inch	mm	inch	mm
0.5"	3.750	95.25	1.875	47.6
0.75"	4.000	101.6	2.000	50.8
1"	4.250	107.9	2.125	54.0
1.5"	4.750	120.6	2.375	60.3
2"	5.750	146.0	2.875	73.0
2.5"	6.250	158.7	3.125	79.4
3"	6.750	171.4	3.375	85.7
4"	8.250	209.5	4.125	104.8
6"	11.25	285.7	5.625	142.9

**T304 and T316L are available.

**All measurements are in millimeters (mm)
Conversion to inches, 25.4mm=1inch



TUBES AND FITINGS

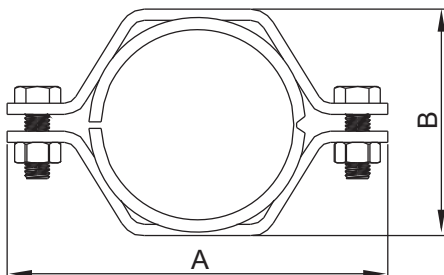
- 3A sanitary finish ID and OD
- Other finishes are available
- Connections: Welding ends

A³ WELDING FITTINGS
Part for ASTM A270 tubes

1.2



Tube Hanger-24PS
Hex Hanger with PVC



Size	A		B	
	inch	mm	inch	mm
0.5"	2.800	71.1	1.150	29.21
0.75"	2.800	71.1	1.150	29.21
1"	3.425	87.0	1.450	36.8
1.5"	4.000	101.6	2.125	54.0
2"	4.500	114.3	2.500	63.5
2.5"	4.950	125.7	3.125	79.4
3"	5.500	139.7	3.750	95.3
4"	6.950	176.5	4.750	120.7
6"	9.250	235.0	6.625	168.3

**T304 and T316L are available.

NOTE! Treatment: Annealed.

**All measurements are in millimeters (mm)
Conversion to inches, 25.4mm=1inch



Acier Inoxydable / Stainless Steel

Distribution SMS specializes in stainless steel sanitary fittings, tubing, valves and gaskets.

SMS provides products of the highest quality to the food, beverage, pharmaceutical, biotechnology and associate industries. Our complete range of products are designed to provide a smooth, sanitary and non-corrosive environment to house your goods.

DISTRIBUTION SMS

Tel: 514.695.4477
Fax: 514.695.4478

INFO@DISTRIBUTIONSMS.NET
DISTRIBUTIONSMS.NET

16633 HYMUS,
KIRKLAND, QUEBEC
H9H 4R9